

USER



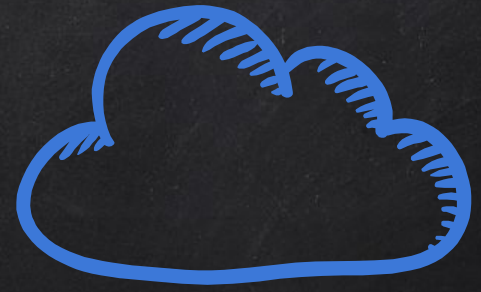
TARGET.COM



EVIL.COM

`target.com/?url=evil.com`

target.com/?url=**google.com**



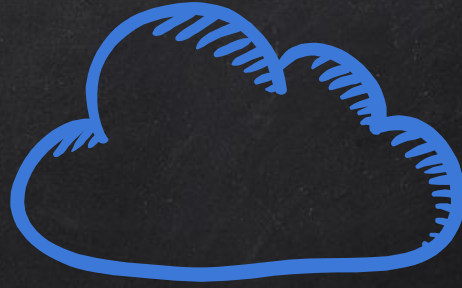
TARGET.COM



EVIL.COM



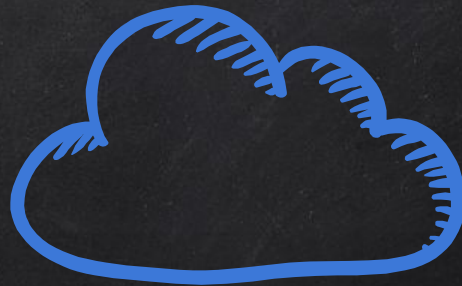
target.com/?url=google.com



TARGET.COM



GOOGLE.COM



TARGET.COM



GOOGLE.COM



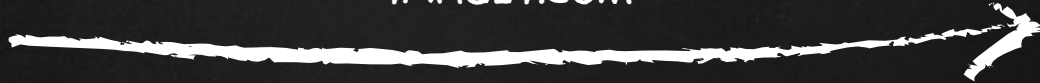
[LOAD] google.com



TARGET.COM

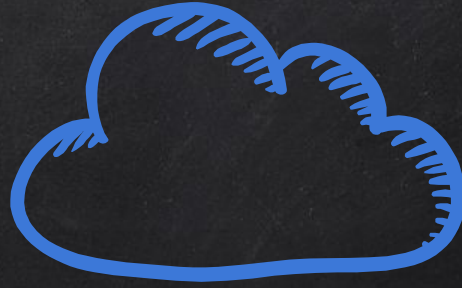


GOOGLE.COM



google.com

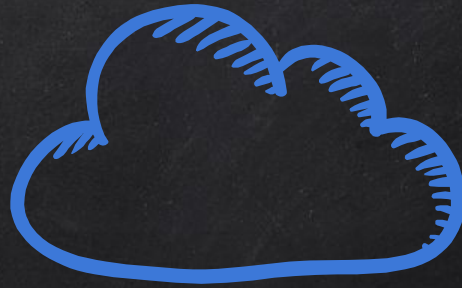
target.com/?url=google.com



TARGET.COM



GOOGLE.COM



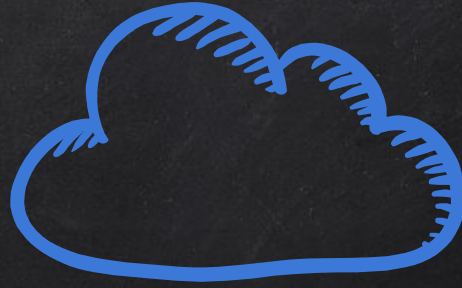
TARGET.COM



GOOGLE.COM



[LOAD] google.com



TARGET.COM



GOOGLE.COM



`[LOAD] google.com#type=0`

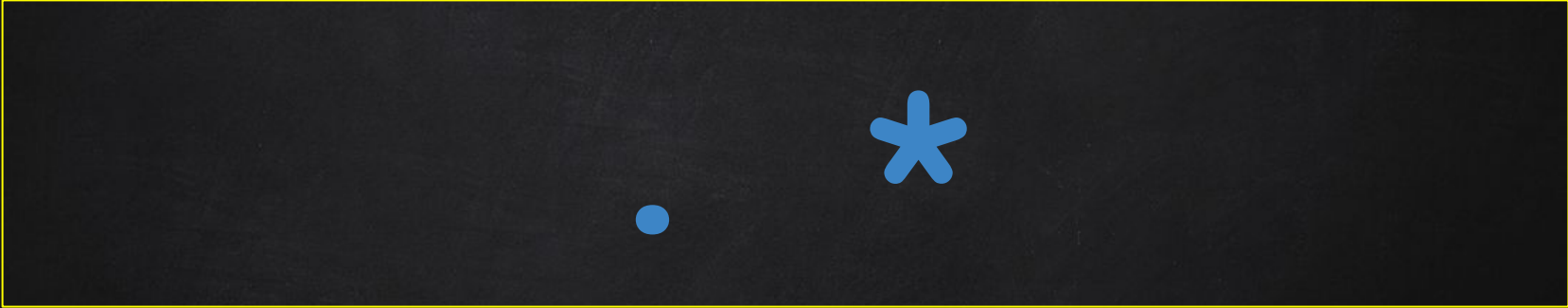
CODE ANALYSIS

REGULAR EXPRESSIONS



- Search for specific **patterns** within a string.
- Uses **rules** to match pattern.

→ Great to tell a program what to look for in a large text.



?

.

*

=

A thick yellow backslash symbol (\).A white question mark (?).A small blue dot (·).A blue asterisk symbol (*).A thick yellow question mark (?).A white equals sign (=).

...//...//...//etc/passwd



../../../etc/passwd

aalertlert



alert