

SecurityTube Linux Assembly Expert (SLAE⁶⁴)



SecurityTube Linux Assembly Expert

Training: <http://www.SecurityTube-Training.com>

Pentester Academy: <http://www.PentesterAcademy.com>

Vivek Ramachandran
SWSE, SMFE, SPSE, SGDE, SISE, SLAE^{32,64} Course Instructor

Module 1: 64-Bit ASM on Linux

10. GDB TUI Mode

Vivek Ramachandran
SWSE, SMFE, SPSE, SGDE, SISE, SLAE⁶⁴, SLAE³² Course Instructor

<http://SecurityTube-Training.com>

GDB TUI Mode

```
Downloads — pentesteracademy@pentesteracademy-VirtualBox: ~ — ssh — 108x29
Register group: general
rax      0x1      1      rbx      0x0      0
rcx      0x0      0      rdx      0x0      0
rsi      0x6000f0 6291696 rdi      0x1      1
rbp      0x0      0x0     rsp      0x7fffffff560 0x7fffffff560
r8       0x0      0      r9       0x0      0
r10      0x0      0      r11      0x200    512
r12      0x0      0      r13      0x0      0
r14      0x0      0      r15      0x0      0

B+ 0x4000b0 <_start>      movabs rax,0x1
   0x4000ba <_start+10>   movabs rdi,0x1
   0x4000c4 <_start+20>   movabs rsi,0x6000f0
>  0x4000ce <_start+30>   movabs rdx,0x22
   0x4000d8 <_start+40>   syscall
   0x4000da <_start+42>   movabs rax,0x3c
   0x4000e4 <_start+52>   movabs rdi,0xb
   0x4000ee <_start+62>   syscall

child process 3725 In: _start      Line: ??      PC: 0x4000ce
(gdb) run
Starting program: /home/pentesteracademy/SLAE-64/HelloWorld

Breakpoint 1, 0x0000000004000b0 in _start ()
(gdb) stepi
0x0000000004000ba in _start ()
0x0000000004000c4 in _start ()
0x0000000004000ce in _start ()
(gdb) █
```

Full Documentation

Next: [Emacs](#), Previous: [Interpreters](#), Up: [Top](#)

25 GDB Text User Interface

- [TUI Overview](#): TUI overview
- [TUI Keys](#): TUI key bindings
- [TUI Single Key Mode](#): TUI single key mode
- [TUI Commands](#): TUI-specific commands
- [TUI Configuration](#): TUI configuration variables

The GDB Text User Interface (TUI) is a terminal interface which uses the curses library. It is supported only on platforms where a suitable version of the curses library is installed.

The TUI mode is enabled by default when you invoke GDB as 'gdb -tui'. You can see the [TUI Bindings](#).

<https://sourceware.org/gdb/current/onlinedocs/gdb/TUI.html>

Pentester Academy

PentesterAcademy

a SecurityTube.net initiative



TOPICS

PRICING

WHY SUBSCRIBE

MEMBER ACCESS



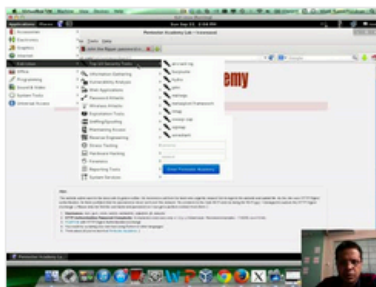
Revolutionizing Infosec Training

Highly Technical, Hands-on, Affordable

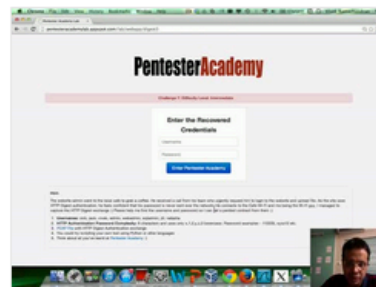
Start Learning Today!

Latest Videos

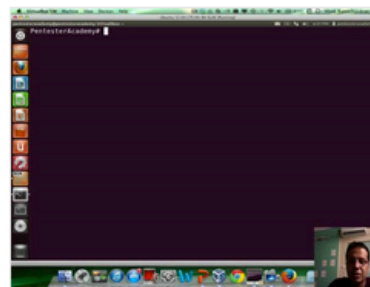
New content added weekly!



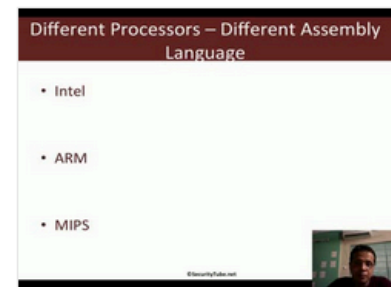
Challenge 7: Cracking Digest Authentication Solution in WAP Challenges



Challenge 7: Cracking Digest Authentication in WAP Challenges



Module 1: GDB Test Solution in x86_64 Assembly Language and Shellcoding on Linux



Module 1: CPU Information in x86_64 Assembly Language and Shellcoding on Linux