

# SecurityTube Linux Assembly Expert (SLAE<sup>64</sup>)



## SecurityTube Linux Assembly Expert

Training: <http://www.SecurityTube-Training.com>

Pentester Academy: <http://www.PentesterAcademy.com>

Vivek Ramachandran  
SWSE, SMFE, SPSE, SGDE, SISE, SLAE<sup>32,64</sup> Course Instructor

# Module 1: 64-Bit ASM on Linux

## 16. Control Instructions

Vivek Ramachandran  
SWSE, SMFE, SPSE, SGDE, SISE, SLAE<sup>64</sup>, SLAE<sup>32</sup> Course Instructor

<http://SecurityTube-Training.com>

# Control Instructions

- Controls the flow of the program
- Based on “events” e.g. calculation led to 0
- Uses flags to determine decision
- Branching
  - Unconditional – JMP
  - Conditional - Jxx

# JMP and Jxx

- Unconditional
  - compare it with the GOTO statement in C
- Jxx – Conditional
  - JZ, JNZ, JA, JAE, JC, JNC etc.
  - uses flags

# Pentester Academy

PentesterAcademy

a SecurityTube.net initiative



TOPICS

PRICING

WHY SUBSCRIBE

MEMBER ACCESS



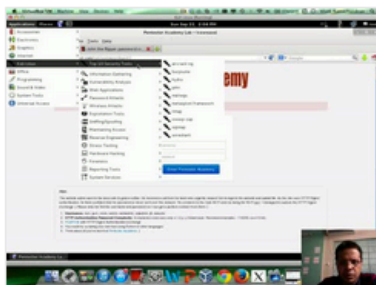
## Revolutionizing Infosec Training

Highly Technical, Hands-on, Affordable

Start Learning Today!

## Latest Videos

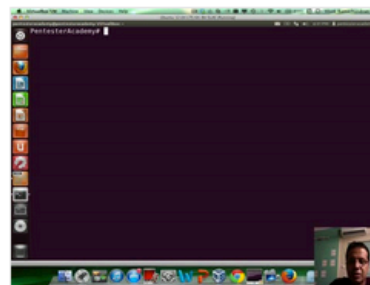
New content added weekly!



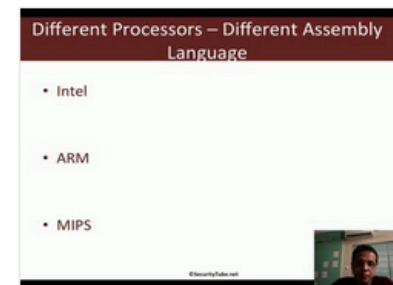
Challenge 7: Cracking Digest Authentication Solution in WAP Challenges



Challenge 7: Cracking Digest Authentication in WAP Challenges



Module 1: GDB Test Solution in x86\_64 Assembly Language and Shellcoding on Linux



Module 1: CPU Information in x86\_64 Assembly Language and Shellcoding on Linux