

SecurityTube Linux Assembly Expert (SLAE⁶⁴)



SecurityTube Linux Assembly Expert

Training: <http://www.SecurityTube-Training.com>

Pentester Academy: <http://www.PentesterAcademy.com>

Vivek Ramachandran
SWSE, SMFE, SPSE, SGDE, SISE, SLAE^{32,64} Course Instructor

Module 1: 64-Bit ASM on Linux

19. Scan and Compare Strings

Vivek Ramachandran
SWSE, SMFE, SPSE, SGDE, SISE, SLAE⁶⁴, SLAE³² Course Instructor

<http://SecurityTube-Training.com>

String Operations

- Scasb/scasw/scasd/scasq
 - Compare with al/ax/eax/rax

- Cmpsb/cmptw/cmptd/cmptq
 - Memory referenced by RSI with RDI

Pentester Academy

PentesterAcademy

a SecurityTube.net initiative



TOPICS

PRICING

WHY SUBSCRIBE

MEMBER ACCESS



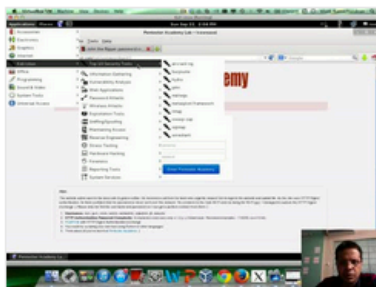
Revolutionizing Infosec Training

Highly Technical, Hands-on, Affordable

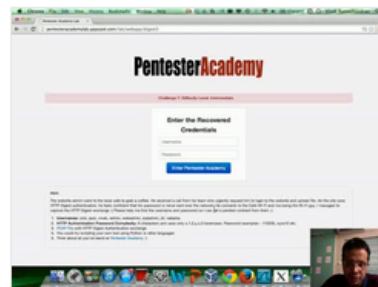
Start Learning Today!

Latest Videos

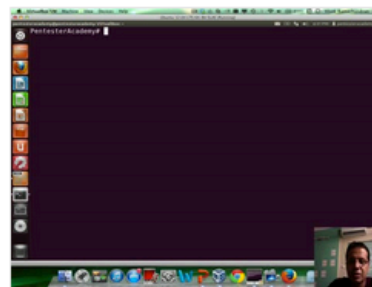
New content added weekly!



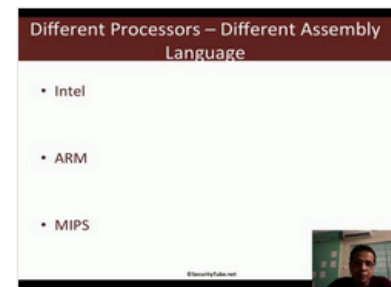
Challenge 7: Cracking Digest Authentication Solution in WAP Challenges



Challenge 7: Cracking Digest Authentication in WAP Challenges



Module 1: GDB Test Solution in x86_64 Assembly Language and Shellcoding on Linux



Module 1: CPU Information in x86_64 Assembly Language and Shellcoding on Linux