

Web Application Pentesting



Vivek Ramachandran

SWSE, SMFE, SPSE, SISE, SLAE, SGDE Course Instructor

Certifications: <http://www.securitytube-training.com>

Pentester Academy: <http://www.PentesterAcademy.com>

Local File Inclusion Basics

Why is LFI Important?

```
; Whether to allow include/require to open URLs (like http:// or ftp://) as files.  
; http://php.net/allow-url-include  
allow_url_include = Off
```

Even if a script is vulnerable but
`allow_url_include = Off` then RFI will not work

Vulnerable Code


<?php

```
echo "File included: ".$_REQUEST["page"]."<br>";  
echo "<br><br>";  
$local_file = $_REQUEST["page"];  
echo "Local file to be used: ".$local_file;  
echo "<br><br>";  
  
include $local_file;
```

?>

Pentester Academy

PentesterAcademy

a SecurityTube.net initiative



TOPICS

PRICING

WHY SUBSCRIBE

MEMBER ACCESS



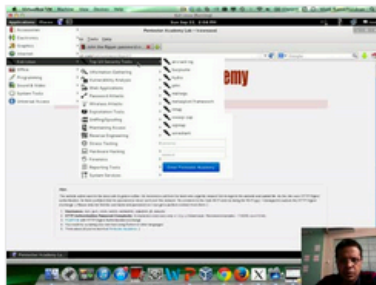
Revolutionizing Infosec Training

Highly Technical, Hands-on, Affordable

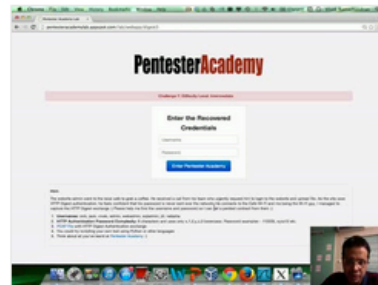
Start Learning Today!

Latest Videos

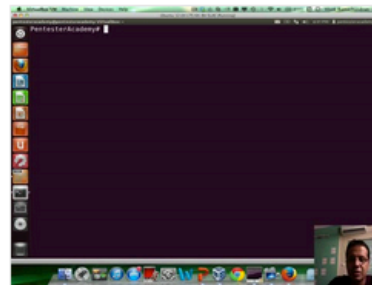
New content added weekly!



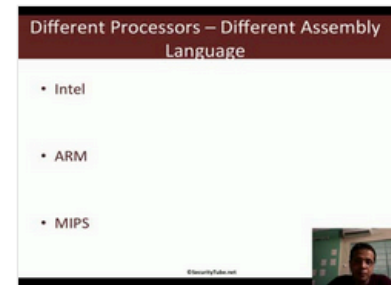
Challenge 7: Cracking Digest Authentication Solution in WAP Challenges



Challenge 7: Cracking Digest Authentication in WAP Challenges



Module 1: GDB Test Solution in x86_64 Assembly Language and Shellcoding on Linux



Module 1: CPU Information in x86_64 Assembly Language and Shellcoding on Linux